

PENTA HOTEL SHENYANG

SHENGYANG, CHINA

Project Type:, Board Room

Scope of Work: Interior design / New Construction

Project Period: 2016

Job Role: Design Director/Takashi Hasegawa

In charge concept design, Schematic Design, and FFE and artwork selections, supervise DD, CD and overall project coordination.

STYLE IS
A SIMPLE WAY
OF SAYING
COMPLICATED
THINGS.

JEAN COCTEAU

2nd FLOOR / BUSINESS FUNCTION ROOMS

Penta Hotel aims to provide open-minded, young and innovative professionals a comfortable, yet inspiring venue where they can freely engage in business and recreational activities. We infused this mission into our general zoning layout, as well as the design and function of each of the Hotel's featured business accommodation rooms.

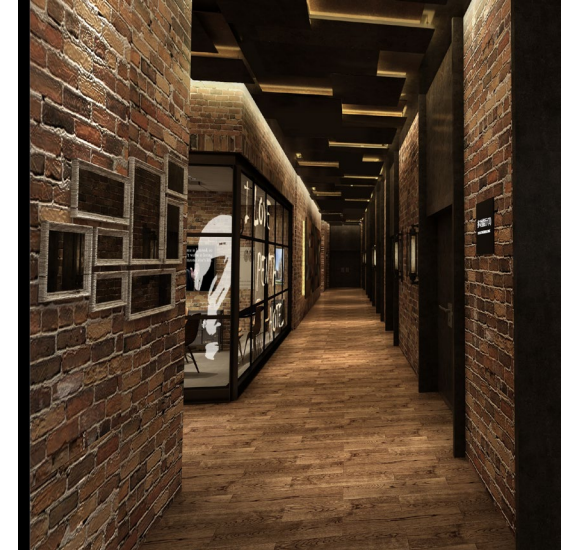




THINK TANK ROOM DESIGN; TWO DIFFERENT SEATING ARRANGEMENTS CAN BE ARRANGED DEPENDING ON TYPE OF DESIRED MEETING.

THINK TANK ROOM

The Think Tank Room offers creative, innovative professionals a free space to converse and work closely with other team members. It is a space where all ideas can be considered, and every theory tested. The ambience of the room is casual and eclectic, just like the free flow of ideas, with austere, mid-century furniture brought together with colorful fabrics, brick walls, and industrial cabinetry.

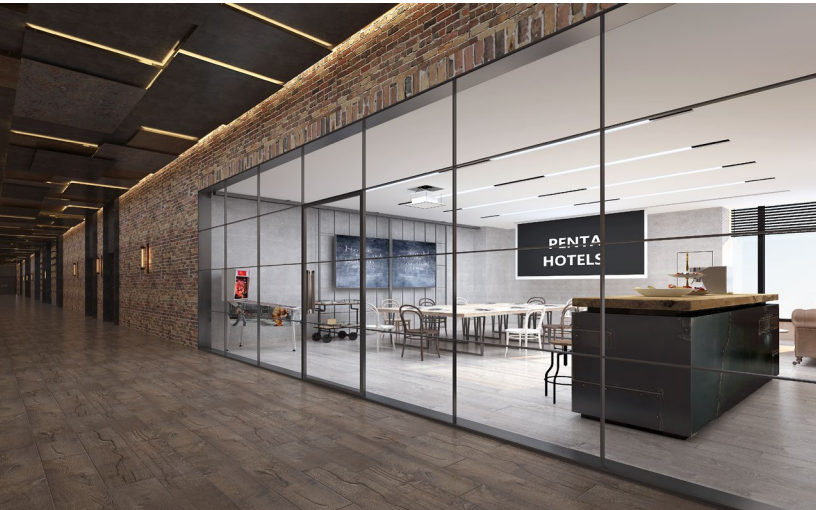


TOP: CORRIDOR DESIGN

BOTTOM: CORRIDOR ADJACENT TO THINK TANK ROOM

BOARDROOM

The Boardroom comfortably accommodates roughly 8-10 guests and primarily serves as a central business hub. This space offers formal boardroom table seating, though guests are also encouraged to make use of additional seating features, including a luxurious leather sofa, and modern barstool-type seating. With these additions, we hope to lessen the strains of corporate hierarchy and foster open, innovative discussion.





FUNCTION ROOM

The Function Room can accommodate roughly 20-30 guests. A removable partition is used to open additional space. Of course, the partition can be left in place for more focused meetings with select participants. Design elements are kept minimalistic to aid focus on room activities. The ambience incorporates industrial elements, but warmth is achieved through natural sunlight. Detailed carpeting is used for sound absorption.

TIME OUT ROOM / BREAKOUT ROOM

The Breakout and Time-Out Rooms function also as F&B stations and allow business guests a refreshing change of pace from the intense discussions of the Think Tank and Boardroom. These rooms can also serve as accommodations for non-business clients reserving space for private parties and/or casual events.



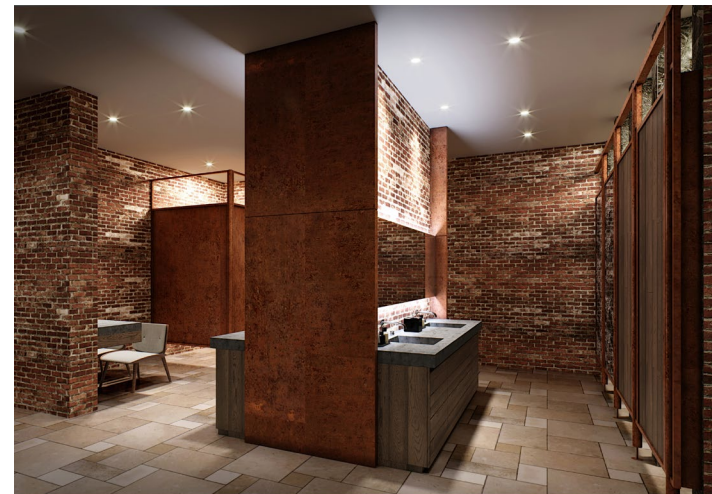
3rd FLOOR / FINESS AND EXECUTIVE OFFICE

A gym and executive offices are located on 3rd floor of the hotel. The general design concept floor shares the industrial and rustic themes of the 2nd floor business function rooms, with ample use of brick, steel, and focused lighting fixtures. A plethora of seating arrangements and accommodations are possible based on guest needs and requests.





GYM DESIGN; RAYS OF SUNLIGHT SHINE THROUGH THE WINDOWS; GENERAL AMBIENCE IS INDUSTRIAL AND RUSTIC, YET THE COLOR SCHEME IS LIGHT TO MAKE GUESTS' WORKOUTS MORE COMFORTABLE.



TOP: MALE RESTROOM DESIGN



BOTTOM: FEMALE RESTROOM DESIGN